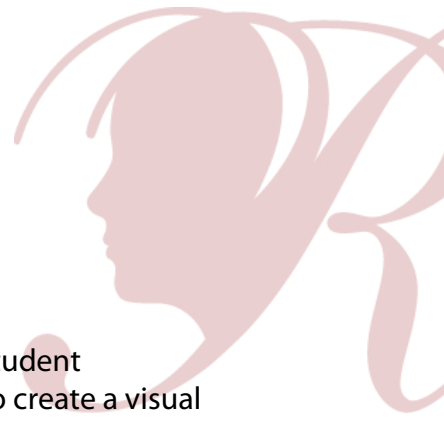


## Category Guidelines

### *Visual Arts*



**VISUAL ARTS** include many art forms that are visual in nature. The artist (student submitting entry) is a person who captures their own thoughts and ideas to create a visual piece of art.

**Accepted forms of visual art include:** Architecture (2D/3D), carpentry, ceramics, collages, photographic collages (multiple photos cut/pasted), computer-generated image, crafts, design, dioramas, drawing, fiberwork, jewelry, kites, metal etching/punch work, mobiles, painting, printmaking, sculpture and wind chimes. Reproductions or enlargements of other artwork are not accepted.

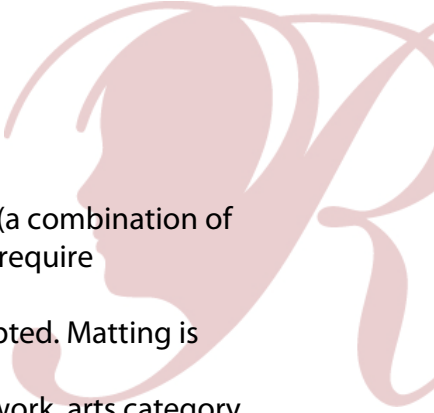
An explanation of the art form might be a useful addition to the artist statement. Whether an entry displays use of formal technique or a simple approach, it will be judged primarily on how well the student uses his or her artistic vision to portray the theme, originality and creativity.

**Copyright:** Use of copyrighted material, including any copyrighted cartoon characters or likeness thereof, is not acceptable in any visual arts submission, with the following exceptions:

- Visual artwork may include public places, well-known products, trademarks or certain other copyrighted material as long as that copyrighted material is incidental to the subject matter of the piece and/or is a smaller element of a whole. The resulting work cannot try to establish an association between the student and the trademark/business/material, or influence the purchase/non-purchase of the trademarked good.
- Visual arts collages may include portions of existing copyrighted works, such as photographs, magazine clippings, internet images and type cut out of a newspaper, as long as those portions of copyrighted works are used to create a completely new and different work of art.

#### **Submission Requirements:**

- Only new pieces of artwork inspired by the theme may be submitted.
- Each entry must be the original work of one student only.
- 2D artwork (e.g. painting)
  - Dimensions must not exceed 24x30 inches, including matting.
  - Paper entries must be mounted on sturdy material.
  - Include one digital image of artwork with your submission.

- 
- 3D artwork (e.g. sculpture)
    - Must include packaging materials and 3 photos of the entry (a combination of angles) for judging, ID and exhibition purposes (entries that require assembling/repairing from transporting will be disqualified).
  - Framed artwork and artwork containing loose materials is not accepted. Matting is accepted.
  - Label back of entry/entry packaging with student name, title of artwork, arts category and division.
  - Submit artwork and student entry form according to your PTA's instructions.
  - Accepted file formats: JPEG, JPG, and PNG.

***All participants must also follow Official Rules for Participation***